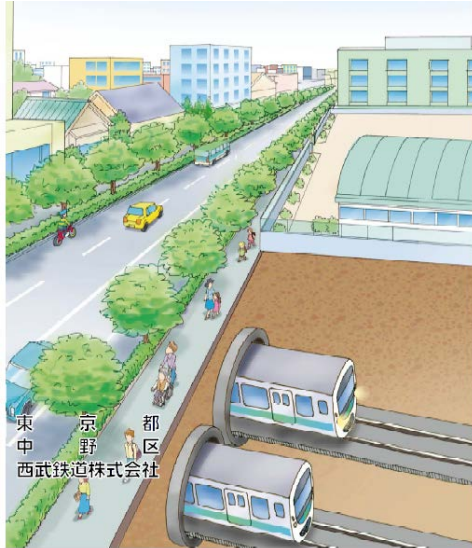


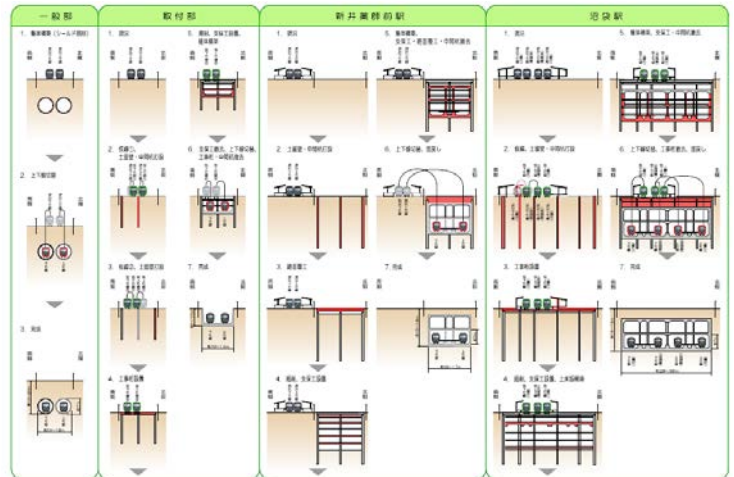
Urban Development Tours #3

Modern Civil Engineering Construction Site Visit 2.4 km-long Grade Separation Project Seibu-Shinjuku Line



Outline Figure

(Source: Tokyo Metropolitan Government Website)



Construction Flow Chart

(Source: Tokyo Metropolitan Government Website)

Place to Visit: **-Seibu-Shinjuku Line construction sites**

At a highly urbanized city with huge population like many areas in Tokyo, you will see continuous multi-level crossings both road and railroad. Currently, the grade separation project for Seibu-Shinjuku Line between Nakai-station and Nogata-Station is under construction. This 2.4 km long project is to relocate the railroad underground. The benefits of this project are enormous, for example, achieving smoother traffic flow by removing 7 crossings, improving safety, developing regions along the line, improving convenience, and more. During this tour, you will see the quality of Japanese civil engineering directly at the construction site. Also, you will learn about Japanese transportation policy.

Date: WEDNESDAY, APRIL 17, 2019

Time: 9:30 am – 12:30 pm

Fee: ¥1,000. -

Tour Capacity: 15 people (Minimum: 5 people)

Dress: Casual and Comfortable

(NO slippers, sandals, open-toe shoes or high heels.)

Note: The above plan is subject to change without notice.



Sponsored by CECAR8